



INDOFINE Chemical Company, Inc.

121 Stryker Lane, Bldg. 30, Suite 1 • Hillsborough, NJ 08844 • U.S.A.

Phone: (908) 359-6778 • FAX: (908) 359-1179

website: www.indofinechemical.com

e-mail: chemical@indofinechemical.com

CERTIFICATE OF ANALYSIS

Catalog Number: 19-875

Product Name: **1-METHYL-4-[2,4,6-TRIMETHOXYPHENYL]-1,2,3,6-TETRAHYDROPYRIDINE**

CAS Number: [113225-07-3]

Lot Number: 0509083

Chemical Formula: $C_{15}H_{21}NO_3$

Molecular Weight: 263.34

Melting Point: 117-118.6°C

Appearance: Off white powder

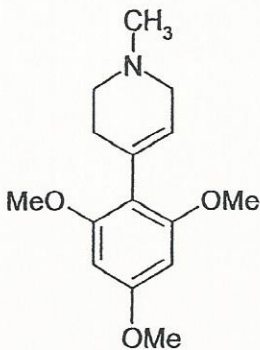
Solubility: Soluble in Chloroform

NMR Spectrum: Enclosed (conforms to the structure)

IR Spectrum: Enclosed

Storage: Store in a cool, dry place

Purity(HPLC): 99+%





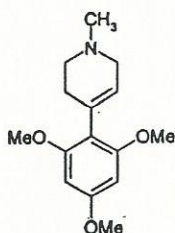
INDOFINE Chemical Company, Inc.

121 Stryker Lane, Bldg. 30, Suite 1 • Hillsborough, NJ 08844 • U.S.A.

Phone: (908) 359-6778 • FAX: (908) 359-1179

website: www.indofinechemical.com

e-mail: chemical@indofinechemical.com



HPLC ANALYSIS

Catalog No.: 19-875

Product Name: 1-Methyl-4-[2,4,6-trimethoxyphenyl]-1,2,3,6-tetrahydropyridine

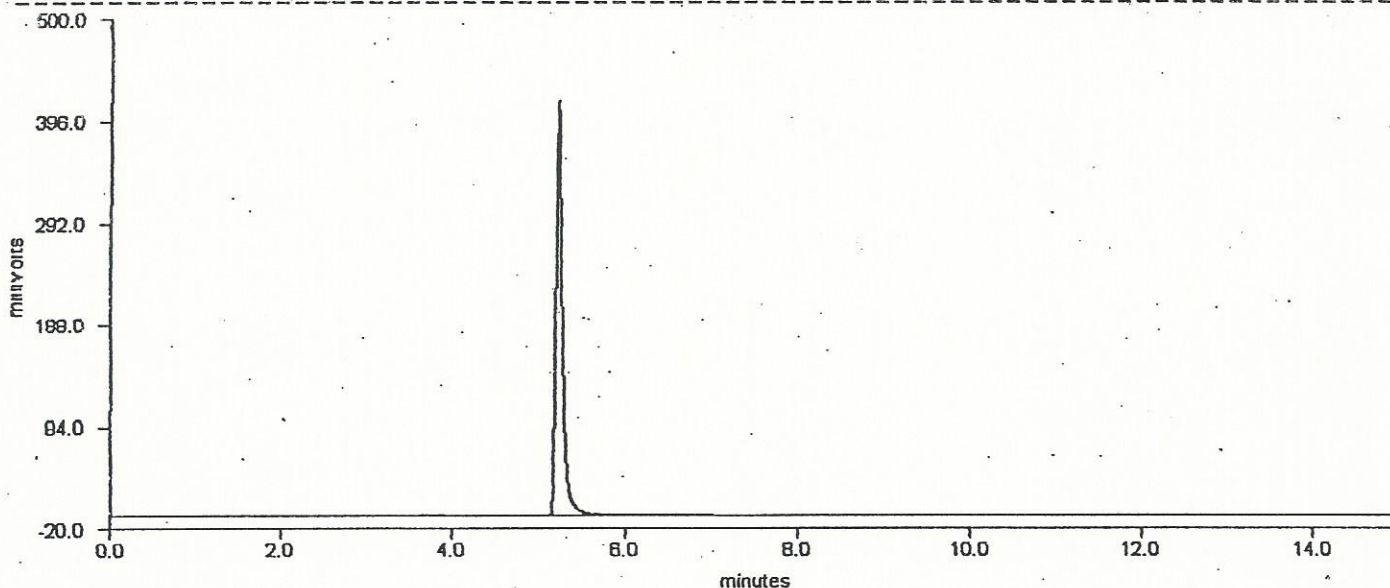
Lot No.: 0509083

FLOW RATE : 1.0ml/Min WAVELENGTH : 254nm, COLUMN : C18(250X4.6mm)

MOBILE PHASE : ACETONITRILE : PHOSPHATE BUFFER PH(5.0) (60+ 40)

DELTA CHROMATOGRAPHY DATA SYSTEM

STRIPCHART PLOT FOR CHROMATOGRAM



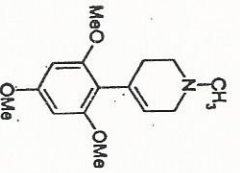
DELTA CHROMATOGRAPHY DATA SYSTEM

LISTING PEAK TABLE FOR CHROMATOGRAM

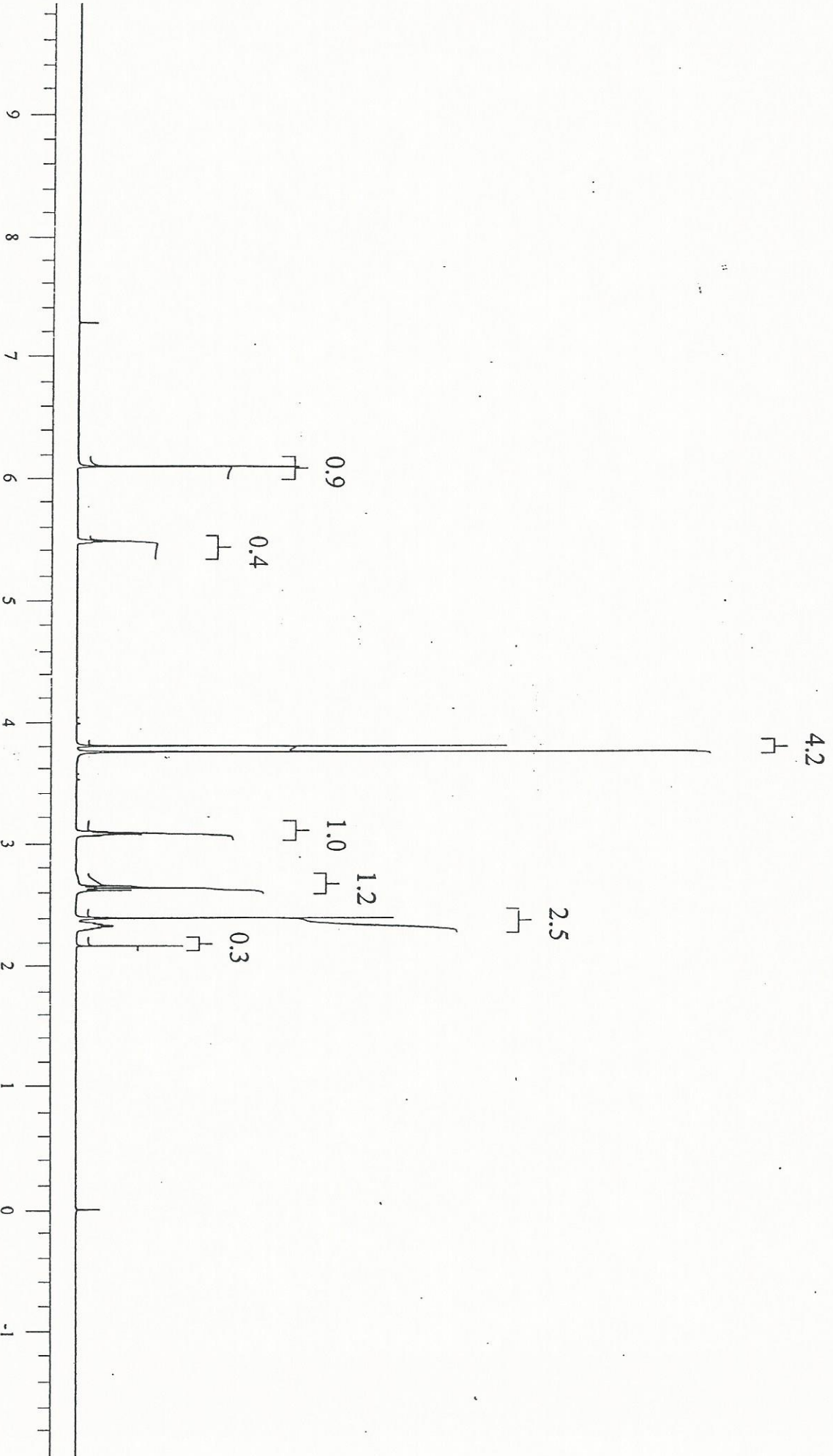
#	Type Name	Ret.Time	Area(uVSec)	Height(mV)	Area Percent
1	MM	3.77	8820	0.7	0.3
2	VB	5.23	2555140	425.8	99.7



INDOFINE Chemical Company, Inc.
121 STRYKER LANE
BLDG. 30, SUITE 1
HILLSBOROUGH, NJ 08844

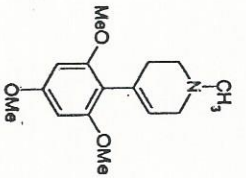


Catalog No.: 19-875
Product Name: 1-Methyl-4-[2,4,6-trimethoxyphenyl]-1,2,3,6-tetrahydropyridine
Lot No.: 0509083





INDOFINE Chemical Company, Inc.
121 STRYKER LANE
BLDG. 30, SUITE 1
HILLSBOROUGH, NJ 08844



Catalog No.: 19-875
Product Name: 1-Methyl-4-[2,4,6-trimethoxyphenyl]-1,2,3,6-tetrahydropyridine
Lot No.: 0509083

